

# MOVING TECHNOLOGIES



## PARTNER EQUO<sup>®</sup> - PE

COLUMN PEC



FIXED OVERHEAD PEF



OVERHEAD TROLLEY MOUNTED PES

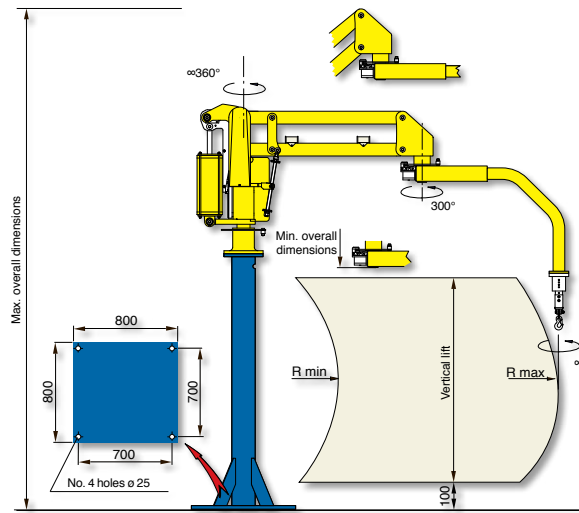


 **dalmec**  
Industrial Manipulators

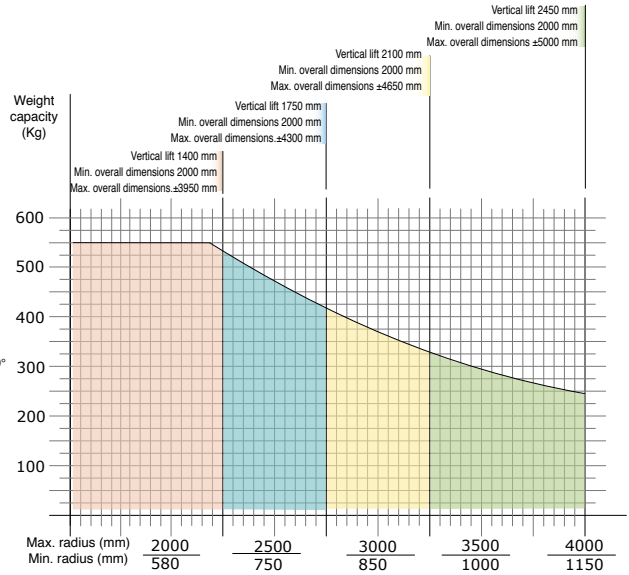
### Pneumatic Manipulator PARTNER EQUO with articulated arms

PARTNER EQUO equipped with special gripping tools, is particularly suitable to manually handle, in a weightless condition, center and off-set loads in any direction. Thus enables the operator to work quickly, with precision and without fatigue, in excellent ergonomic and safety conditions. Its versatile structure also allows to fit in any working environment.

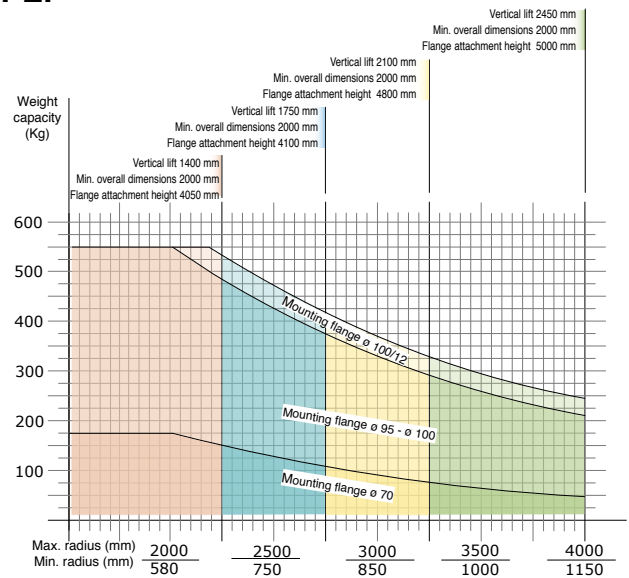
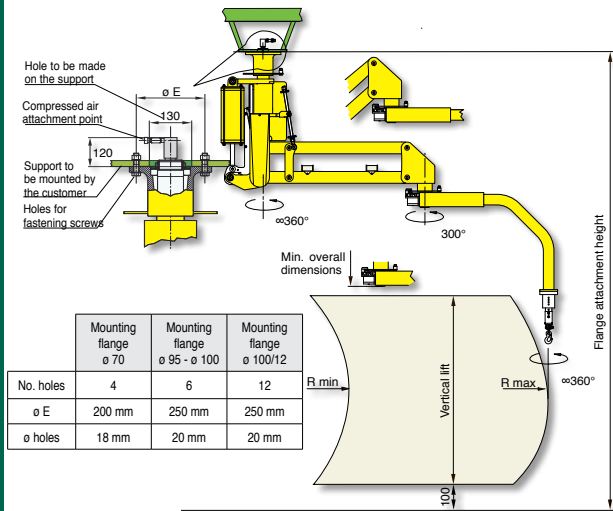
## Partner column mounted - PEC



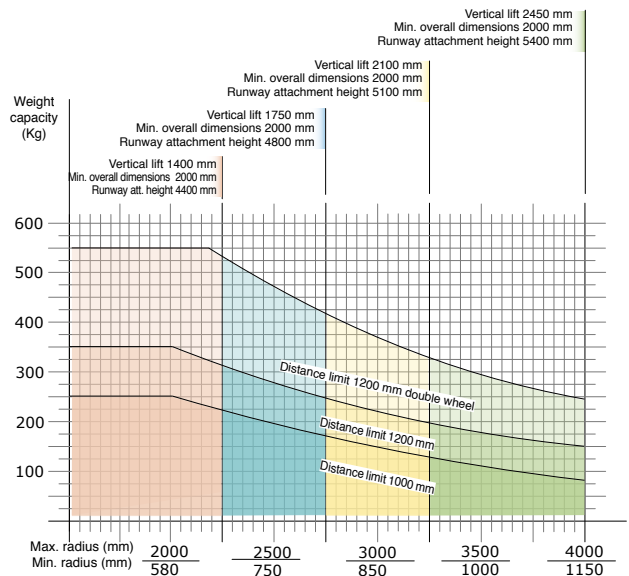
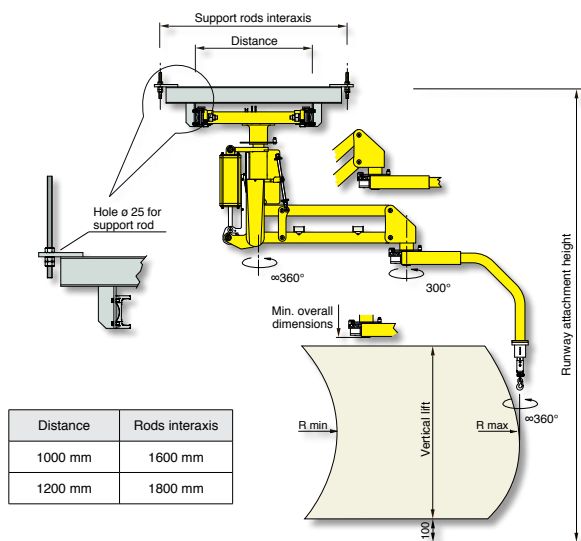
Structural versions: column mounted on fixed base-plate, autostable base-plate of our supply properly dimensioned or with autostable motorised trolley that translates on a simple profile track on the floor.



## Partner overhead mounted - PEF



## Partner overhead trolley mounted - PES



Air supply: Dry and oil-free compressed air min constant 0.7÷0.8 MPa